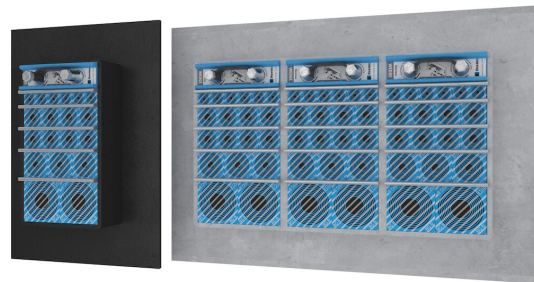




Roxtec G BG™-gennemføring

Gennemføring med flange for potentialudligning og jording, til svejsning.

Roxtec G BG™ er en gennemføring til tætning, potentialudligning og jording af armerede og metalbelagte kabler og rør. Den har en stålramme til svejsning samt Roxtec BG™-tætningsmoduler, der kan tilpasses forskellige kabelstørrelser. Rammen kan anvendes sammen med en GE forlængerramme i galvaniseret stål, til at dække hele dybden af en tyk væg. Roxtec EC (electrical continuity) teststicks kan benyttes til at hjælpe med at angive gennemføringens elektriske ydeevne.



- Har indbygget reservekapacitet

Produktegenskaber



Brandklassificeret



Vandtæt



Gastæt



Elektrisk sikkerhed

Byggekonstruktion



El-skabe og kabinetter



Metal

Monteringstype



Svejsning

Normeringer og certifikater

Brand

- A-KLASSE i henhold til IMO 2010 FTP-kode
- E/EI-klassificering i henhold til EN 13501
- F/T-klassificering i henhold til UL 1479

Tæthed

- Gas: 2,5 bar (katastrofe)
- Vand: 4 bar (katastrofe)

Understøtter

- Stel og jording

Rammedimensioner

mm/kg

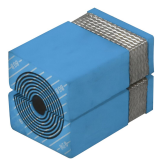
De nedenstående rammevarianter udgør et begrænset udvalg. Du kan se hele udvalget af rammer og konfigurationer på [roxtec.com](https://www.roxtec.com).

	Title	Rammeåbninger	Pakkeareaø	Udvendige mål WxHxD	Åbningsmål w x h	Vægt	Art.-nr.
	G 6x1 PRIMED	1	120 x 180	252.5 x 350 x 60	188(+15/-15) x 290(+15/-15)	4.4	G006000000112
	G 6x2 PRIMED	2	120 x 180	383 x 350 x 60	318(+15/-15) x 290(+15/-15)	7.4	G006000000212
	G 6x3 PRIMED	3	120 x 180	513.5 x 350 x 60	449(+15/-15) x 290(+15/-15)	9.8	G006000000312
	G 6x1 AISI316	1	120 x 180	252.5 x 350 x 60	188(+15/-15) x 290(+15/-15)	4.8	G006000000121
	G 6x2 AISI316	2	120 x 180	383 x 350 x 60	318(+15/-15) x 290(+15/-15)	7.3	G006000000221
	G 6x3 AISI316	3	120 x 180	513.5 x 350 x 60	449(+15/-15) x 290(+15/-15)	9.8	G006000000321



Data om tætningskomponenter

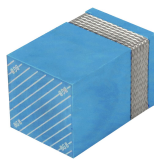
Tætningskomponenter



RM BG™-modul med Multidiameter™



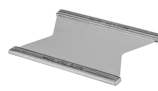
Lubrikant



RM BG™ fast kompensationsmodul



wedge og wedgekit



Stayplate



tilbehør ES og BG



holderværktøj



BG™ tætningskit



svejsværktøjer

For mer information, besøg venligst [roxtec.com](https://www.roxtec.com).

The product information provided by Roxtec does not release the purchaser of the Roxtec system, or part thereof, from the obligation to independently determine the suitability of the products for the intended process, installation and/or use.

Roxtec gives no guarantee for the Roxtec system or any part thereof and assumes no liability for any loss or damage whatsoever, whether direct, indirect, consequential, loss of profit or otherwise, occurred or caused by the Roxtec systems or installations containing components not manufactured by an authorized manufacturer and/or occurred or caused by the use of the Roxtec system in a manner or for an application other than for which the Roxtec system was designed or intended.

Roxtec expressly excludes any implied warranties of merchantability and fitness for a particular purpose and all other express or implied representations and warranties provided by statute or common law. User determines suitability of the Roxtec system for intended use and assumes all risk and liability in connection therewith. In no event shall Roxtec be liable for indirect, consequential, punitive, special, exemplary or incidental damages or losses.

The Roxtec products are offered and sold in accordance with the conditions of the Roxtec General Terms of Sales. The latest version of the Roxtec General Terms of Sales can be downloaded from <https://www.roxtec.com/en/about-us/about-roxtec/general-terms-of-sales/>

We reserve the right to make changes to the product and technical information without further notice. Any errors in print or entry are no claims for indemnity. The content of this publication is the property of Roxtec International AB and is protected by copyright.

This document was generated on: 2024-04-17